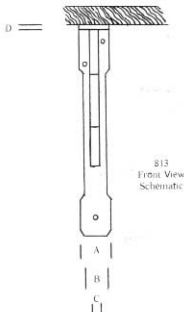
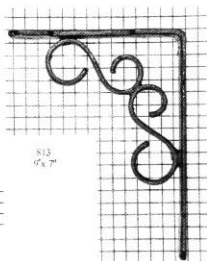


SHELF BRACKETS, CHEST CORNERS, TURN BUTTONS



813

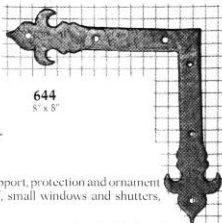
	A	B	C	D
4" x 3"	3/8"	3/8"	3/8"	5/16"
6" x 5"	3/8"	3/8"	7/16"	1/16"
8" x 7"	1/2"	3/8"	3/8"	3/8"



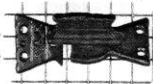
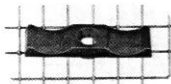
Strong and solid, these brackets will support heavily loaded shelves, mantelpieces and counters. Either arm can be mounted to the wall or supporting structure.



Squares in background are 1/2" x 1/2"



In addition to uses on chests and trunks, these corners are applied for support, protection and ornament to doors and cabinet doors and to accentuate features like bas-relief, small windows and shutters, plaques and built-ins.



1111
2 3/8" x 1 1/8"

A proper screw, omitted above, is supplied.

Turn Buttons, also called Wing Turns, are used on storm sash, window screens, cupboard doors and in similar applications.