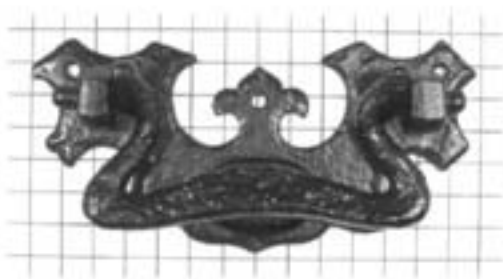


HANDLES, PULLS, AND LIFTS

See also "Pull Handles" (pages 44-47) and "Cabinet Pulls" (pages 83-89).

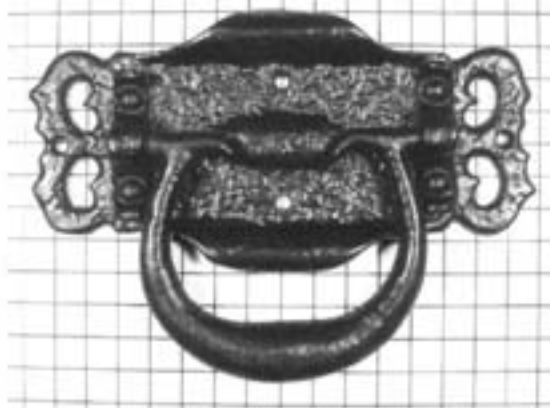


834

Plate 6-3/4" x 3-1/4"

Projection - handle flat 1"

Projection - handle extended 2-1/2"



835

Plate 7-3/4" x 4"

Projection - handle flat 1-1/4"

Projection - handle extended 4"



1540

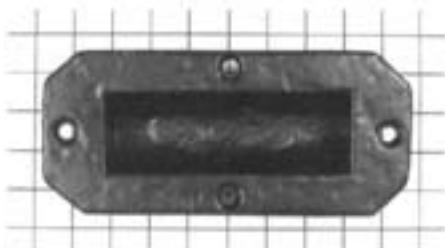
Plate 5-3/8" x 2-3/4"

Projection - handle flat 1-3/8"

Projection - handle extended 3"

These vintage trunk and dowry chest patterns can also be used for heavy drawers, wine cellar doors, built-ins, and in all similar applications.

Squares in photo background are 1/2" x 1/2".

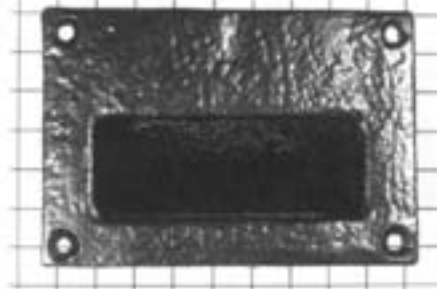


1194

4-1/2" x 2"

Pocket depth 3/4"

Small ledges for finger hold.



4325

4-3/8" x 3"

Pocket depth 1-1/8"

Top part of pocket has a 3/8" ledge.



3062

2-1/2" x 1-3/4"

3" x 2-1/8"

shown 3-1/2" x 2-1/2"

4" x 3"

4-1/2" x 3-1/2"

These flush pulls are designed for flush installation and are used for pulling, lifting, and sliding where projection interferes with operation, or is not desired. Use with drawers, double-hung windows, sliding doors, and in similar applications.



2586

3-1/4" x 1-1/2"

Projection 1-1/2"



2587

Mounting Plate 2-1/2" x 7/8"

Projection 1-1/4"



These articles are most often used as drawer pulls and sash lifts on double-hung windows.