

## LETTERS AND NUMBERS

The letters and numbers are solid throughout and can be applied to any flat surface either directly or raised in the manner indicated in the drawing by brass pedestals which can be painted to match the colour of the building.

The letters are supplied in the nominal heights: 2", 3", 4" (shown), 6" and 12"

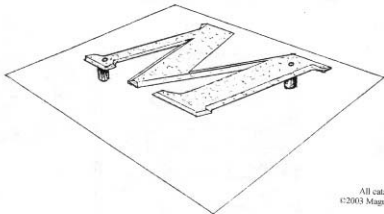
The numbers in the nominal heights: 2", 3", 4" (shown) and 6"

Standard Brass Pedestals are 1" long with appropriate wood screws in the diameters:

$\frac{5}{16}$ " for 2",  $\frac{3}{8}$ " for 3",  $\frac{7}{16}$ " for 4",  $\frac{1}{2}$ " for 6" and  $\frac{3}{4}$ " for 12"

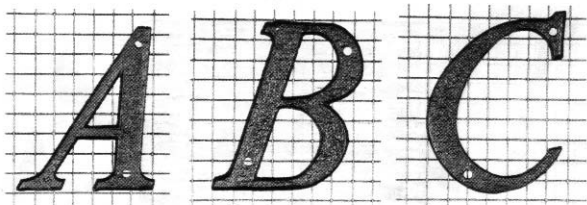
For application to concrete, brick, and similar hard surfaces, bolts and expansion shields are recommended (not supplied). Bolts should be dipped in rust-resistant paint or powdercoated.

Catalogue number for letters, numbers, and pedestals is 1979 followed by identification and size.



M on pedestals

All catalogue contents  
©2003 Maguire Iron Corporation



All letters, numbers and pedestals are ordered by Catalogue No. 1979 followed by identification and size e.g.: 1979 Pedestal  $\frac{3}{4}$ " x 1"