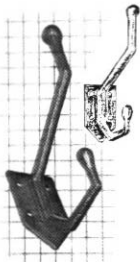


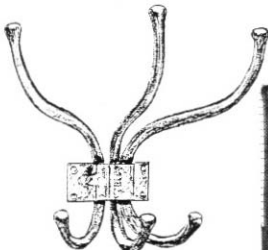
## HOOKS

- A = Mounting Plate Width  
 B = Mounting Plate Height  
 C = Overall Height  
 D = Projection  
 E = Overall Width if different from A



739

A	B	C	D
1 1/8"	3"	6 1/2"	3 1/8"



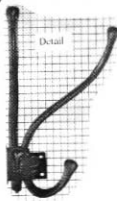
687

A	B	C	D	E
4 1/8"	2"	10"	9 1/2"	14 1/8"

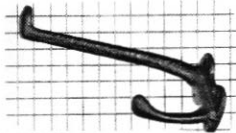


734

A	B	C	D	E
1 1/8"	2 1/8"	3 1/8"	4 1/8"	3 1/8"

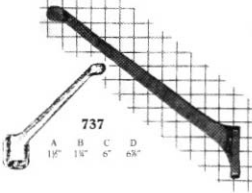


Detail



720

A	B	C	D
1 1/8"	2 1/2"	4 1/4"	5 1/8"



737

A	B	C	D
1 1/2"	1 3/4"	6"	6 3/8"

All catalogue contents  
 ©2003 Maguire Iron Corporation



740

A	B	C	D
2 1/4"	2 5/8"	8"	4 1/8"