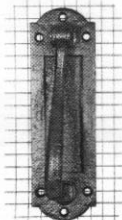


LETTER BOX PLATES with knockers

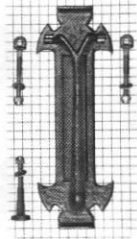
Bolts, nuts, and screws included where necessary. Phosphor bronze springs fitted to all plates.



952

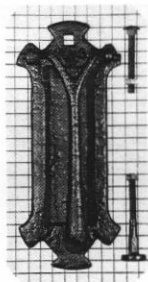
A	B	C	D
2 1/2"	8 3/4"	1 1/2"	4 1/2"

A = Overall Width
B = Overall Height
C = Opening Width
D = Opening Height



954

A	B	C	D
4 1/2"	12"	1 1/4"	7"



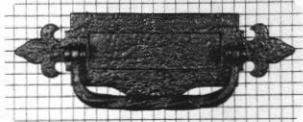
955

A	B	C	D
4"	10"	2"	6 1/4"



963

A	B	C	D
8 1/4"	3 1/2"	4 3/4"	1 1/2"



1085

A	B	C	D
Shown 12"	4"	5 1/2"	1 1/2"
14 1/2"	4 1/2"	8"	1 1/2"

Squares in background are 1/2" x 1/2"



1219

A	B	C	D
9 1/2"	4 1/2"	5 1/2"	1 1/2"

All catalogue contents
©2003 Maguire Iron Corporation