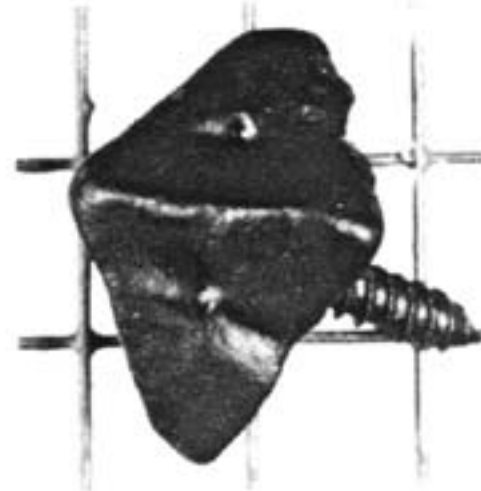


## DOOR STUDS AND DOOR GRILLE

Also called Door Dogs, Door Nails, or Clavos, all are supplied with integral screws for secure installation. Used originally to thwart blows by axes and swords, the studs still protect doors and gates from accidental scratches and provide authentic ornamentation.

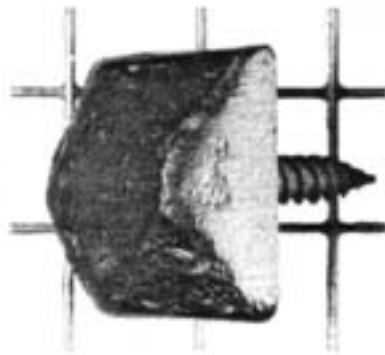


**153**  
1" x 1"  
Projection 3/4"

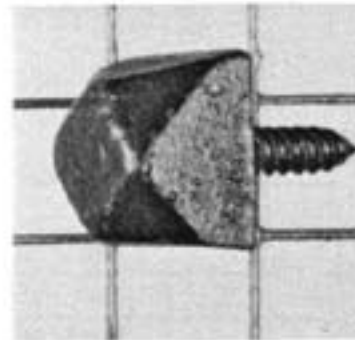


Available in 2 sizes:

- 3/8" square, projects 7/16"
  - 1" square, projects 7/16"
- Screw threads project 3/4".



**1080**



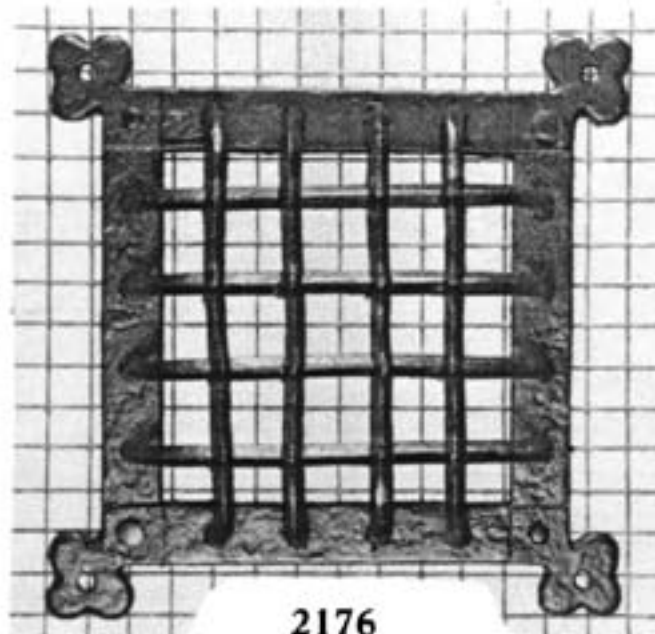
Available in 4 sizes:

- 1/2" square, projects 3/8"
  - 3/8" square, projects 7/16"
  - 3/4" square, projects 1/2"
  - 1" square, projects 9/16"
- Screw threads project 3/4".

**1081**

A Door Grille is often used with a look-through mirror and a small door for additional privacy and security; small hinges, bolts and pulls, as well as small keyhole escutcheons and cabinet locks — if desired — can be selected from appropriate sections of this catalogue.

For a flat version of this Door Grille, see article #2175 on page S2 of the supplement in the back of this catalogue.



**2176**

6-3/4" x 6-3/4"  
Projection 1-1/4"

Squares in background are 1/2" x 1/2"

6.75" x 6.75" size shown.  
Also available in 12" x 12".