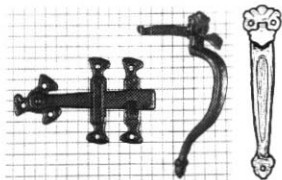


## GATE LATCHES

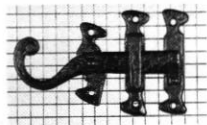


**1147**  
Latch 6"  
Handle 7"  
Lever Length 3-1/4"



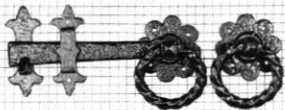
**1248**  
with spindle hole —  
supplied with spindle  
Latch 8"  
Latch 9"  
Latch 10" shown

Compare with  
Ring Handle #717



**1152**  
Latch 6"

When ordering specify as shown (AS)  
or opposite (OP)



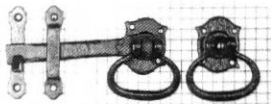
**1249**  
with spindle hole—  
supplied with spindle  
Latch 6"  
Latch 7"  
Latch 8"  
Latch 10" shown

Compare with Ring Handle #679

The picture, above, is accurate for  
#1249 with 8" and 10" latches.  
Note that #1249 with 6" and 7" latches  
use a different design of keeper and hook  
that are the same as those used with  
#867 Gate Latch Set (see page 22).



**1247**  
with spindle hole —  
supplied with spindle  
Latch 7"  
Latch 9" shown



**1251**  
with spindle hole —  
supplied with spindle  
Latch 5"  
Latch 7" shown  
Latch 9"