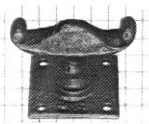


DOOR KNOBS

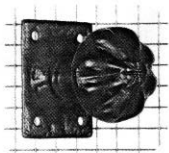


1122

Knob 3/8"
Rose 2 1/4" x 2 1/8"

This old design, sometimes called a lever knob,
is usually installed in horizontal position.

Squares in background are 1/2" x 1/2"



1203

Knob 2"
Rose 2 1/2" x 1 1/2"

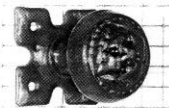
Use keyhole escutcheon for
keyhole below with mortice
key lock



1205

Knob 2"
Rose 2 1/2" x 2 1/8"
or 3 1/4" x 3 1/4"

when installed in diamond position



1207

Knob 2"
Rose 2 1/8" x 2 1/8"
or 3 1/4" x 3 1/4"

when installed in diamond position

Projection 3"



1206

Knob 2"
Rose 2 1/8"
Projection 3"