

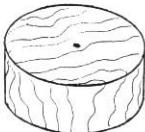
LOCK EXTRAS

M 4

- ① Extra Keys with Locks
- ② Keyed alike
- ③ Extra Keys with Locks
- ④ Keyed alike
- ⑤ Extra Keys with Master Locks
- ⑥ Up to 306 differs
- ⑦ Up to 1500 differs (4 levers)
- ⑧ Stronger follower spring
- ⑨ Up to 120 differs one straight Master Suite
- ⑩ Grand Master Suite 60 differs per suite, 6 suites maximum

- ⑪ Master or sub-master Keys
- ⑫ Grand Master Keys
- ⑬ Master Keved or keyed alike to pass within M106, M107, M161, M162, M168, M169, M349
- ⑭ Extra Keys with Locks
- ⑮ Keyed alike
- ⑯ Keved alike to pass within M163, M176, M264, M276, M964, M976
- ⑰ Standard blanks, where available
- ⑱ Master blanks, where available

To ensure greater security for the owner, all keys of a Master keyed suite are of special sections. Additional cut keys are obtainable from the factory but only with the written authority of the owner. Not issued as blanks unless specified by owner.



2 1/8" Wood Plug
1 1/8" thick
1 1/8" thick
Other thicknesses
on special order

M 6010

LOCK ACCESSORIES



Kirkpatrick Spindle
7.58mm x 3"
7.58 mm x 5"
Other lengths
on special order

M 6011

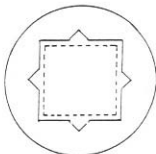


Dummy Spindle 7.58 mm
Diameter 1"
Projection 1 1/8"

M 6012



M6013
DUMMY PLATE
1 1/4" D



M 5000
Special Follower

All catalogue contents
©2003 Maguire Iron Corporation

Our followers are broached to receive the Kirkpatrick Spindle (dotted line in schematic) in a parallel position. We can supply all our Locks and Latches fitted with the M 5000 Special Follower which is broached to

1. A point-down position of 7.6 mm (.300/.305 in) to receive most American spindles including Baldwin.
2. A parallel position of 8 mm (.315/.320 in.) to receive Jado and similar spindles.

Fitted with the M 5000 and a stronger follower spring (see Lock ④) our wide variety of Locks and Latches can be used with many unsprung lever handles and knobs of other manufacturers thus offering design combinations, especially in backsets, not available elsewhere. Please check all dimensions before ordering.