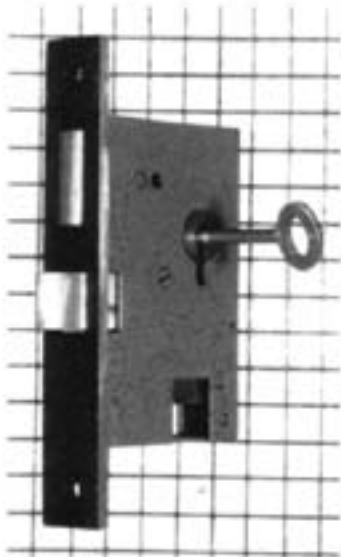


## WEIGHTED ENTRANCE LOCK

Provided with 2 Keys, Strike Plate, and Wood Screws



A superior handmade entrance lock that fits entry door latch handles #615, 656, and 665 on both sides. (See page 17 in this catalogue.) All moving parts and forend plate are solid brass. Please specify keyed-different (KD) or keyed-alike (KA) when ordering.

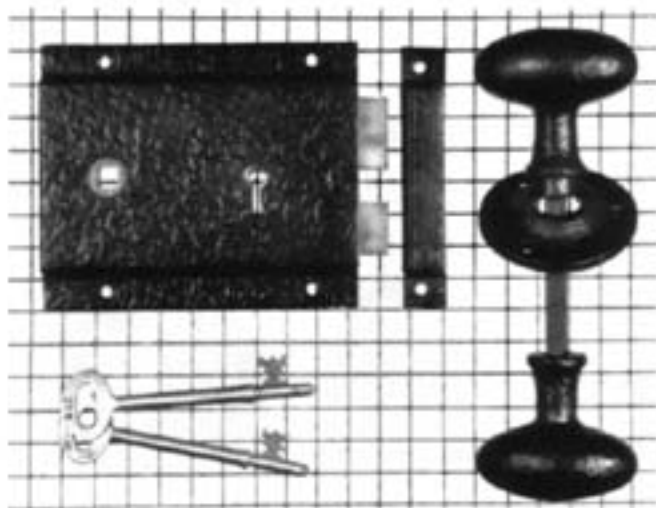
BACKSET	CASE DIMENSIONS		FOREND	FINISHES AVAILABLE	SYMBOL	EXTRAS
	HIGH	DEEP				
2-1/4"	4-1/4"	3"	Single 6-1/8" x 1"	Dull Black Armor Bright Solid Brass	DB AB BRS	M4-3 Extra Key M4-4 Keyed Alike

**M5** shown in Dull Black finish

*Squares in photo background are 1/2" x 1/2".*

## RIM LOCK

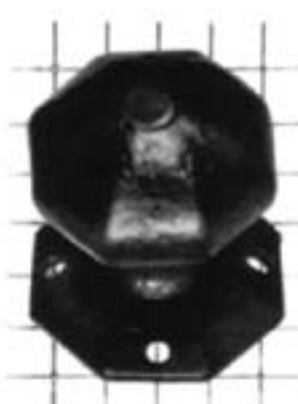
Provided with 2 Keys, Strike, & Wood Screws (plus Knob Set if desired)



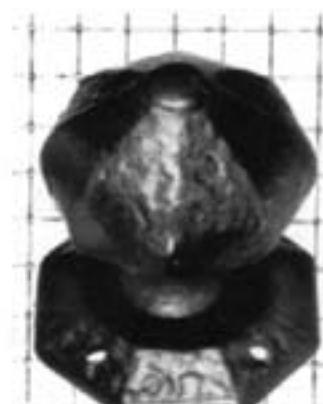
**M1204** shown in Dull Black finish  
with 1550 knob set

*Squares in photo background are 1/2" x 1/2".*

Solid brass, handmade mechanism in forged jacket. Handmade bearded keys. Non-reversible. Please specify keyed-different (KD) or keyed-alike (KA), and "as pictured" (AP) or "opposite pictured" (OP) when ordering. Lock may be ordered with or without knob sets; see price list. Available knob sets are #1550, 3056 in 2-1/4", and 3056 in 2-3/4".



**3056 - 2-1/4" diameter**  
knob set (2 knobs) with spindle  
and 2-5/8" diameter backplate



**3056 - 2-3/4" diameter**  
knob set (2 knobs) with spindle  
and 3-1/8" diameter backplate

BACKSET	CASE DIMENSIONS		FOREND	FINISHES AVAILABLE	SYMBOL	EXTRAS
	HIGH	DEEP				
4"	4-1/8"	5"	4-1/8" x 5/8"	Dull Black Armor Bright Solid Brass Solid Bronze	DB AB BRS BNZ	M4-3 Extra Key M4-4 Keyed Alike

All catalogue contents  
©2003 Maguire Iron Corporation