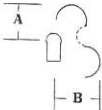


CABINET PULLS WITH KEYHOLE



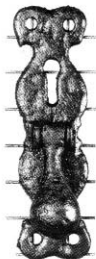
- A — Distance from center of round part of keyhole to farthest of backplate above.
 B — Distance from center of round part of keyhole to farthest part of backplate on either side.
 C — Projection

Schematic
Cabinet Pull with Keyhole



Backplate	A	B	C	Compatible with Lock See Section "Locks"	
4" x 1 1/16"	3/8"	9/16"	3/8"	M 1144-2 1/2	M 1584-3
				M 1286-2 1/2	M 1422-2 1/2
				M 1582-2	M 1432-2 1/2
				M 1582-2 1/2	M 1432-3
				M 1582-3	M 1434-3

806



1530
solid pendant

Backplate	A	B	C	Compatible with Lock See Section "Locks"	
4" x 1 1/8"	3"	3/8"	1 1/8"	M 1582-2	NOT FOR DRAWER LOCKS
				M 1582-2 1/2	
				M 1582-3	
				M 1584-3"	

1216

With backplate mounted flush with edge of door the lock bolt will extend 1/2" past the edge. We can extend the lock bolts to allow mounting the pull at a larger distance from the edge of the door.

Backplate	A	B	C	Compatible with Lock See Section "Locks"	
3 1/2" x 1"	3/8"	1/2"	3/8"	All Cupboard Locks Drawer Locks: M 1432-3 M 1434-3"	



1533

Backplate	A	B	C	Compatible with Lock See Section "Locks"	
4 3/8" x 1"	1 1/16"	1/2"	1/2"	All Cupboard Locks Not for Drawer Locks	



1531
solid pendant
side view

Backplate	A	B	C	Compatible with Lock See Section "Locks"	
4 3/8" x 1"	1 1/16"	1/2"	1/2"	All Cupboard Locks Not for Drawer Locks	



1568

Backplate	A	B	C	Compatible with Lock See Section "Locks"	
3 1/8" x 1 3/8"	3/8"	3/8"	3/8"	All Drawer Locks Cupboard Locks: M 1582-2" M 1582-2 1/2" M 1582-3 M 1584-3	

All catalogue contents
©2003 Maguire Iron Corporation