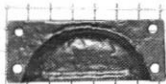


CABINET PULLS

with screws except where noted



1549

A	B	C	D	E
3 7/16"	1 3/4"	—	—	3/8"



1542

A	B	C	D	E
2 3/4"	1 9/16"	—	2 1/4"	3/8"



1944

1" Globe
1 3/8" Round Plate

E
1 7/16"

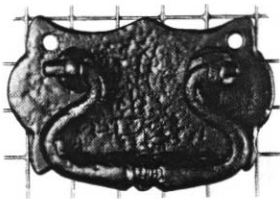


1543

A	B	C	D	E
1 9/16"	1 9/16"	—	3 3/8"	3/8"

solid pendant

All catalogue contents
©2003 Maguire Iron Corporation



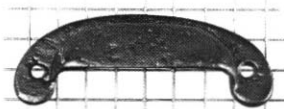
1541

A	B	C	D	E
2 3/4"	1 3/8"	—	—	3/8"



1569

A	B	C	D	E
3 3/4"	2 3/4"	—	2 3/8"	3/8"



3960

A	B	C	D	E
4 3/4"	1 3/8"	—	—	3/8"