

## CABINET PULLS

with screws except where noted



1218

A	B	C	D	E
1 1/8"	1 3/8"	1 3/8"	2 1/8"	3/8"

larger than 1217



1243

A	B	C	D	E
2 3/16"	1 3/8"	3"	4 1/8"	1"

bolt and nut and screw



1528

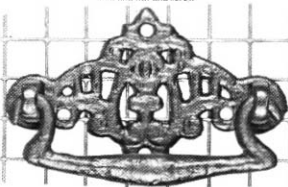
A	B	C	D	E
1 3/16"	1 3/16"	1 1/2"	—	3/8"



1529

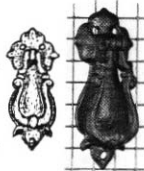
A	B	C	D	E
1 3/16"	3"	—	—	3/8"

solid pendant



1536

A	B	C	D	E
1 3/16"	2"	—	2 3/16"	5/8"



1141

A	B	C	D	E
1 3/8"	3 3/8"	—	—	1 5/16"



1538

A	B	C	D	E
4 1/4"	2 1/4"	—	2 3/8"	1 1/2"



1539

A	B	C	D	E
4 1/4"	2 3/8"	—	—	3/8"