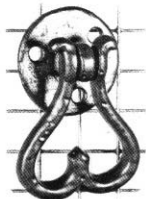


CABINET PULLS

with screws except where noted



1217

A	B	C	D	E
1 3/8"	1 3/8"	1 3/8"	2 3/8"	3/4"

smaller than 1218



1091

A	B	C	D	E
2"	1 3/4"	—	3 3/4"	3/8"

bolt and nut



1192

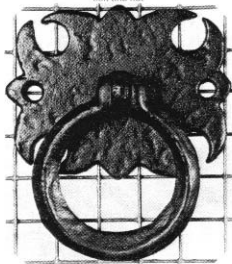
A	B	C	D	E
1 3/8"	1 5/8"	—	2 1/4"	3/8"



1195

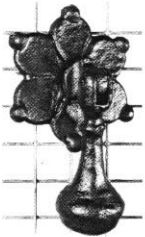
with screw
with machine screw
with bolt and nut

1 3/8" oval knob E
1 3/8" round plate 1 3/4"



1153

A	B	C	D	E
2 3/4"	2 3/4"	—	3"	3/8"



1042

A	B	C	D	E
2"	1 3/4"	—	3"	3/16"

bolt and nut
solid pendant



1135

A	B	C	D	E
1"	1"	1"	1"	3/8"

Squares in background are 1/2" x 1/2"

All catalogue contents
©2003 Maguire Iron Corporation