

CABINET PULLS

with screws except where noted

Squares in background are 1/2" x 1/2"

All catalogue contents
©2003 Maguire Iron Corporation



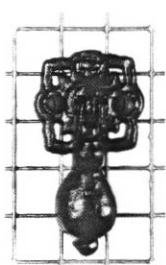
1013

A	B	C	D	E
1 1/8"	1 1/8"	1 1/2"	2 1/8"	5"



1016

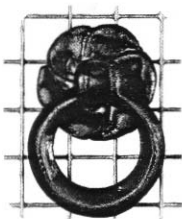
A	B	C	D	E
1 1/8"	3 3/8"	—	3 1/2"	5"



1018

A	B	C	D	E
1 7/8"	1 7/8"	—	2 1/8"	5"

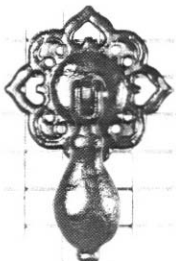
convex pendant



1024

A	B	C	D	E
1 1/8"	1 1/8"	1 7/8"	2"	5 1/2"

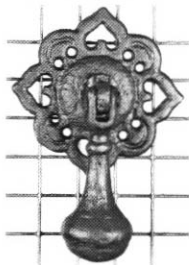
bolt and nut



1039

A	B	C	D	E
2 1/8"	2 1/8"	—	3 7/8"	5"

bolt and nut
convex pendant



1041

A	B	C	D	E
2 3/8"	2 3/8"	—	3 3/8"	1 1/8"

bolt and nut
solid pendant