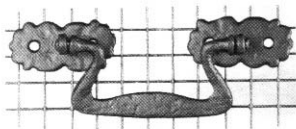


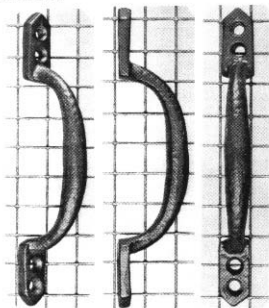
CABINET PULLS

with screws except where noted



917

A	B	C	D	E
5 $\frac{1}{8}$ "	1 $\frac{1}{2}$ "	—	1 $\frac{1}{8}$ "	$\frac{3}{8}$ "



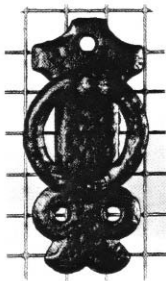
937
side

937

side view

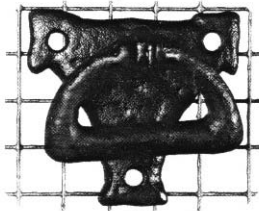
937
front

A	B	C	D	E
$\frac{1}{2}$ "	4 $\frac{1}{8}$ "	—	—	1 $\frac{1}{16}$ "



985

A	B	C	D	E
1 $\frac{1}{8}$ "	3 $\frac{1}{8}$ "	1 $\frac{1}{8}$ "	—	$\frac{3}{8}$ "



983

A	B	C	D	E
2 $\frac{1}{8}$ "	2 $\frac{1}{8}$ "	—	—	$\frac{3}{8}$ "

Compare with 892 and 1075
in Section "Ring Handles"



1009

A	B	C	D	E
3 $\frac{1}{8}$ "	1 $\frac{1}{8}$ "	—	1 $\frac{1}{2}$ "	$\frac{3}{8}$ "

All catalogue contents
©2003 Maguire Iron Corporation