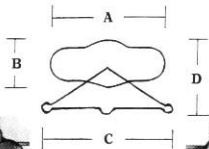


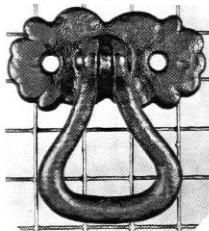
## CABINET PULLS

with screws except where noted

See also "Pull Handles" and "Handles, Pulls, and Lifts."



A = Width of backplate(s)  
 B = Height of backplate(s)  
 C = Overall Width  
 D = Overall Height  
 E = Maximum projection



909

A	B	C	D	E
2"	1"	—	2 1/4"	3/8"

Schematic  
 Cabinet Pull

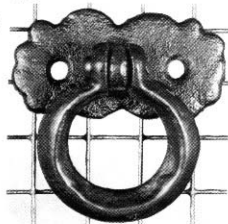


564

4"  
 5"

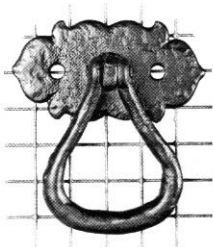
A	B	C	D	E
4 1/2"	—	—	4 7/8"	1 1/8"
5 1/2"	—	—	5"	1 1/8"

Compare with 564  
 in Section "Pulls"



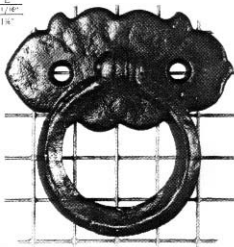
910

A	B	C	D	E
2"	1"	—	1 1/8"	3/8"



915

A	B	C	D	E
2 3/4"	1 1/8"	—	2 3/4"	3/8"



916

A	B	C	D	E
2 3/4"	1 1/8"	—	2 3/4"	3/8"

All catalogue contents  
 ©2003 Maguire Iron Corporation